



---

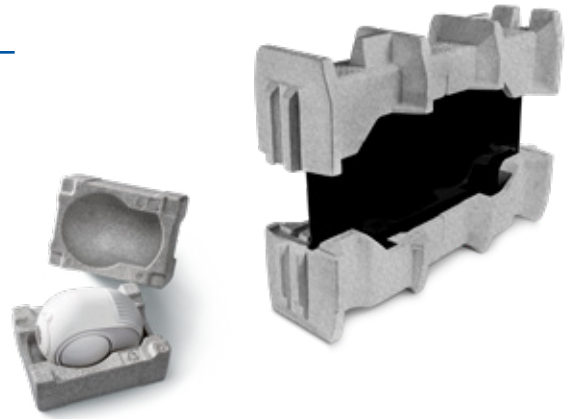
MOLDING

**rEPS**

LIFE CYCLE ASSESSMENT

# rEPS MEANS CUSTOMIZED YET SUSTAINABLE PACKAGING.

rEPS (recycled expanded polystyrene) is made from 100 percent physically recycled EPS waste. New protective packaging can be made of up to 100 percent of this material. As such, rEPS represents a sustainable, safe and easy solution - previously used standard EPS-tools can be reused. rEPS retains the packaging properties of conventional EPS and is therefore ideally suited as transport packaging for sensitive products that require customized protection while conforming to REACH standards.



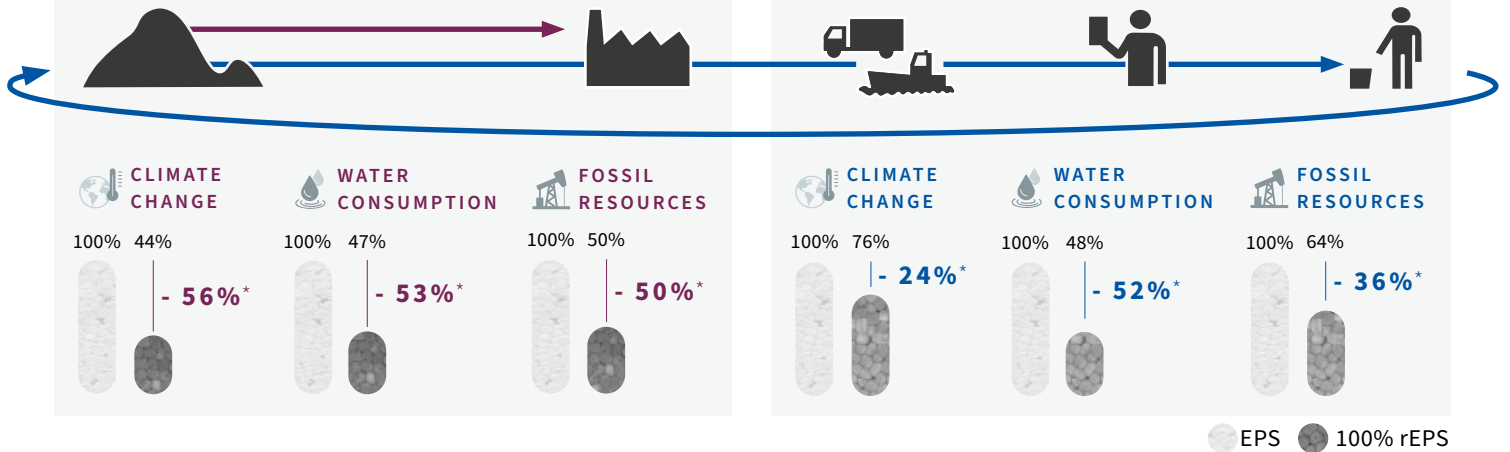
HOW rEPS RAW MATERIAL AND FINISHED PROTECTIVE PACKAGING IMPACT SEVERAL ASPECTS OF SUSTAINABILITY

## CRADLE TO GATE EPS / rEPS MATERIAL

From fossil raw material to EPS beads  
vs. (E)PS-waste to rEPS beads

## CRADLE TO GRAVE PROTECTIVE PACKAGING

From fossil raw material to end-of-life of the product  
vs. (E)PS-waste to end-of-life of the product



The Life Cycle Assessment (LCA) results are obtained from the Storopack internal EcoDesign tool. This tool allows to perform streamlined Life Cycle Assessment according to the ISO 14044 standard recommendations. More about EcoDesign at Storopack: [www.storopack.com/ecodesign](http://www.storopack.com/ecodesign) The Circular Footprint Formula (from the PEF) has been used to calculate the recycled content, which is recommended by the European Commission. This means that Storopack « shares » the benefit of the use of recycled content with the supplier of recycled materials (i.e. the company who puts recyclable goods on the market). \*Reduction of indicator EPS compared to rEPS

### STOROPACK - PERFECT PROTECTIVE PACKAGING

Wherever in the world you send your products, we want them to be well protected while in transit.

### SUSTAINABILITY MEANS RELYING ON INNOVATIVE SOLUTIONS.

Our mission is to provide perfect protective packaging and first-class molded parts. For this purpose new, more sustainable raw materials are a great way to protect the environment and natural resources. This is why many of our products are made using renewable or recycled materials and can be recycled after use.

More about rEPS: [www.storopack.com/reps](http://www.storopack.com/reps)

### CONTACT US

**Storopack Deutschland GmbH + Co. KG**  
Untere Rietstrasse 30  
72555 Metzingen  
Germany

Africa & Middle East +49 7123 1640  
Asia-Pacific +852 3421 2392  
Europe +800 7867 6722  
North America +1 800 827 7225  
South America +55 11 5677 4699

[info@storopack.com](mailto:info@storopack.com)  
[www.storopack.com](http://www.storopack.com)