



BASEline Packing Stations

CUSTOMISABLE AND
PROFESSIONAL

Storopack – SPECIALIST IN PROTECTIVE PACKAGING	3
BASEline Packing Stations	4
MANUAL PACKING STATION LIGHT H-FRAME	7
MANUAL HEAVY PACKING STATION	8
ELECTRIC PACKING STATION ERGOMINI II	9
ACCESSORIES	10
SILO INTEGRATIONS & TROLLEYS	18
SILO FREESTANDING	19
SILO INTEGRATED ON THE PACKING STATION	20
HEAVY PACKING STATION	21
FLEX TROLLEY	22

As of: 2019

1874 Founded as a
tannery

1959 Storopack Hans
Reichenecker GmbH + Co. is
founded; Production of
technical molded parts
made from Styropor®

69 locations

479 million Euros
in revenue

2,470 employees



PERFECT PROTECTION MEANS BEING EQUIPPED FOR ANY SITUATION.

Storopack is a specialist in protective packaging. Our promise is to provide “Perfect Protective Packaging” to optimally protect every product while in transit. We think holistically, advising our customers on how to make the packaging process more efficient and, if desired, integrating tailored solutions. Our comprehensive range covers all of the requirements associated with optimal product protection. With 2,470 employees at certified production facilities and locations in 19 countries, we maintain a decentralized structure and are always in direct vicinity to our customers.

OUR STRENGTHS – YOUR ADVANTAGE:

- ▶ OWNER-MANAGED FAMILY COMPANY
- ▶ LOCAL CONTACTS
- ▶ INTERNATIONAL FOCUS
- ▶ RELIABILITY
- ▶ SERVICE AND CUSTOMIZED ADVICE
- ▶ HIGH PRODUCT DIVERSITY
- ▶ CONTINUOUS IMPROVEMENT OF PACKAGING PROCESSES
- ▶ PROCESS OPTIMIZATION
- ▶ COMPLETE SOLUTIONS ALL FROM A SINGLE SOURCE
- ▶ TURN-KEY SOLUTIONS WITH AUTOMATION PROCESSES

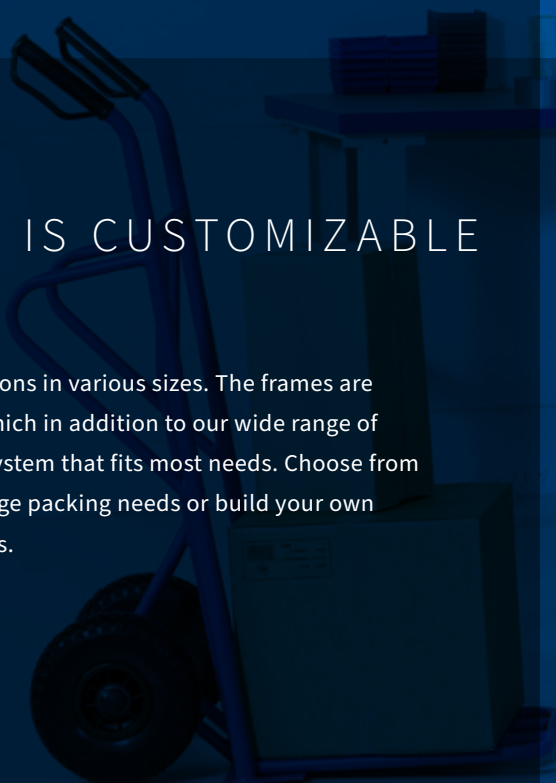
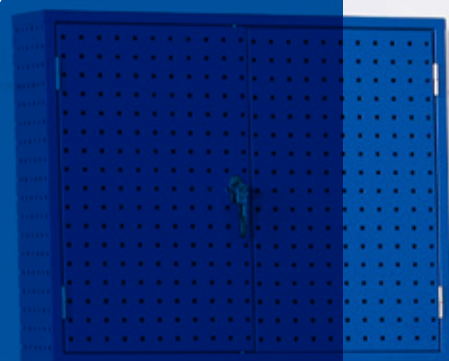
▶ **Storopack image film:** www.storopack.com/perfect-protective-packaging

B

BASEline Packing Stations

FLEXIBILITY IS
WHEN EQUIPMENT IS CUSTOMIZABLE
TO YOUR NEEDS.

Storopack has a wide range of packing stations in various sizes. The frames are available in different widths and depths, which in addition to our wide range of accessories provides a flexible packaging system that fits most needs. Choose from complete packing stations for small and large packing needs or build your own packing station based on your requirements.





BUILD YOUR BASEline Packing Station - STEP BY STEP

1. Choose the type of packing station, manual or electric.
2. Choose the length of the packing station, 1500 or 2000 mm (Depth is 800 mm).
3. Choose whether the packing station should be with or without equipment.
4. Preconfigured BASEline Packing Station with equipment? - You can start from our complete packing stations as below.
Customizable BASEline Packing Station without equipment? - Start at step 5 to build a packing station completely from scratch.



MANUAL PACKING STATION LIGHT H

L-1500 mm
42-606-0001

L-2000 mm
42-607-0001



MANUAL PACKING STATION HEAVY

L-1500 mm
42-614-001

L-2000 mm
42-607-0001



ELECTRIC PACKING STATION ERGOMINI

L-1500 mm
42-608-0001

L-2000 mm
42-609-0001

Need more equipment for any of these preconfigured BASEline Packing Stations? - Jump down to page 10 to supplement the station with more equipment.

5. Start here to build a packing station completely from scratch and chose your base.



**MANUAL PACKING
TABLE LIGHT H**

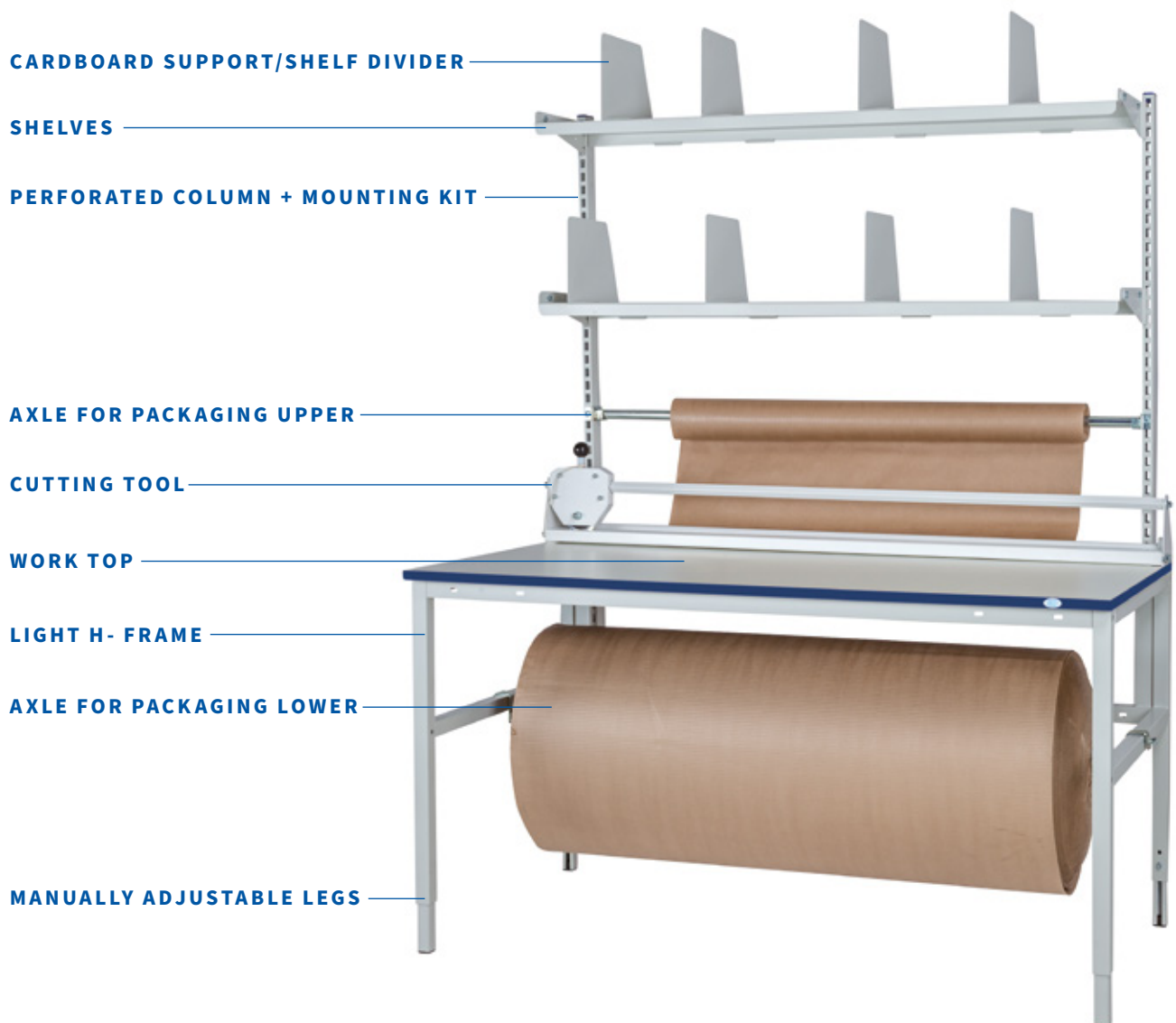


**MANUAL PACKING
TABLE HEAVY**



**ELECTRIC PACKING
TABLE ERGOMINI**

6. Go to page 10 to supplement your packing station with equipment that fits regardless of the type of table or size.





The basic solution for comfortable and ergonomic work:

Manual Packing Table Light H-frame

MANUAL PACKING TABLE LIGHT H-FRAME

Frame consists of 2 pairs of legs from squared pipes 35x35x2 mm, extension frame and C-profile. The table can be

fitted with extension, drawer unit and lower shelf.

MANUAL PACKING TABLE LIGHT H-FRAME INCLUDING 24 MM TABLE TOP

Complete Light H frame contains 2 pairs of legs of square tube 35x35x2 mm, body frame, C-profile and 24 mm table top in grey laminate or grey vinyl. Supplement Light

H-stand with body, door and under shelf.

Frame color: RAL 9002.

Maximum load 150 kg widespread load.

Item no.	Description
42-235-0001	Light H-frame incl. grey laminate 1500x800 mm
42-236-0001	Light H-frame incl. grey laminate 2000x800 mm

TECHNICAL DATA

Maximum of uniformly distributed load:

150 kg

Height range, work top excluded:

700-950 mm

Height range, work top included:

724-974 mm

Worktop:

24 mm, hpl laminate lightgrey, blue ABS-edge.



UNDER SHELF LIGHT H-FRAME 24 MM

Grey laminate with blue border. 24 mm thick shelf.

Crocheted for back support.

Maximum 50 kg widespread load.

Item no.	Description
42-308-0001	1500x585x24 mm
42-309-0001	2000x585x24 mm



The sturdy solution for comfortable and ergonomic work:

Manual Packing Table Heavy

MANUAL PACKING TABLE HEAVY

Complete packing table suitable for industry and warehouse. Table frame consists of two pairs of fully welded legs, bent as a C-profile, size 86x56x2 mm. A fixed table top 40 mm incl. grey laminate board 2000x800 mm. A sturdy heavy leg with manual height adjustment 740 -

1010 mm and a **maximum load of 500 kg widespread load**. Complete Heavy Packing Table frame contains 2 leg trays and 40 mm table top in grey laminate. Supplement Heavy Table with body frame.

Item no.	Description
42-254-0001	Heavy Table 1500x800 mm
42-255-0001	Heavy Table 2000x800 mm

Item no.	Description
35-451-2001	Extension Frame/Multifram 1420 mm
35-452-2001	Extension Frame/Multifram 1920 mm

TECHNICAL DATA

Maximum of uniformly distributed load:

150 kg (with body frame)

Height range, table top excluded:

700-970 mm

Height range, table top included:

740-1010 mm

Table top:

40 mm, hpl laminate light grey, blue ABS-edge.



UNDER SHELF TO MANUAL PACKING TABLE HEAVY

Powder coated steel, beige RAL 9002. Depth 350 mm.

Item no.	Description
200112-21	Under Shelf L-1500 mm, max load 150 kg
200114-21	Under Shelf L-2000 mm, max load 100 kg

ELECTRIC PACKING TABLE ERGOMINI II

Ergomini is an electric height-adjustable packing table which consists of two table legs with integrated motors in each leg. The stand has intermediate bars for increased stability. The table height is easily controlled with a table

ERGOMINI II INCLUDING 24 MM TABLE TOP

Complete Ergomini II contains 2 pairs of square tubes 35x35x2 mm, C-profile and 24 mm table top in grey

Item no.	Description
42-222-0001	Ergomini II incl. grey laminate 1500x800 mm
42-223-0001	Ergomini II incl. grey laminate 2000x800 mm

Item no.	Description	LxD	Colour
41-801-7001	Ergomini II extension frame	1500 mm	Silver
41-802-7001	Ergomini II extension frame	2000 mm	Silver

TECHNICAL DATA

Maximum of uniformly distributed load:

180 kg

Speed with empty table:

20 mm/sec

Height range, work top included:

734-1184 mm

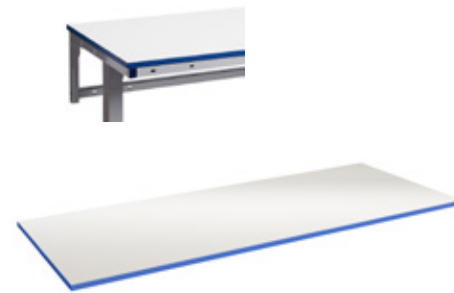
Worktop:

24 mm, hpl laminate lightgrey, blue ABS-edge

control, which is mounted under the table in the table frame. The base frame is ready for an extension frame, which can be ordered separately. 220V electric.

laminate or grey vinyl. Body frame is ordered separately.

Maximum load 180 kg widespread load. Frame color: Silver.



UNDER SHELF ERGOMINI II 24 MM

Grey laminate with blue border. 24 mm thick. Incl. bracket for mounting in a tripod.

Maximum 50 kg widespread load.

Item no.	Description
42-313-0001	1500x350x24 mm
42-314-0001	2000x350x24 mm



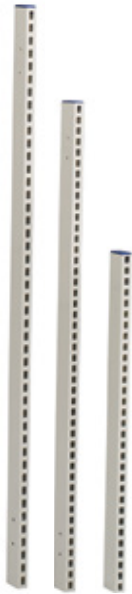
The convenient solution for comfortable and ergonomic work:

Ergomini II



ACCESSORIES

IT'S WELL EQUIPPED WHEN
EVEN THE ACCESSORIES ARE
FIRST CLASS.



PERFORATED UPRIGHTS

Manufactured from profile 50x25x2 mm.
The uprights are attached with help of the mounting kit 35-848-9001. Delivered in 2-pack.

Mounting kit is sold separately.

Item no.	Description
40-645-2002	Perforated uprights, 2-pack, beige, length 900 mm, weight 4 kg
40-647-2002	Perforated uprights, 2-pack, beige, length 1446 mm, weight 6 kg
40-649-2002	Perforated uprights, 2-pack, beige, length 1926 mm, weight 8 kg



MOUNTING KIT FOR PERFORATED UPRIGHTS

For mounting of perforated uprights on extension frame.
The kit includes 2 springloaded square nuts, 2 screws and 2 washers. 1 kit per column

Item no.	Description
35-848-9001	Mounting kit for perforated uprights, weight 0,05 kg



DISTANCE TO UPRIGHTS

RAL 9002 beige.

Item no.	Description
35-490-2001	length 875 mm (for packing station with ingrated silo)
41-688-2001	length 1350 mm
41-289-2001	length 1775 mm



ENERGY PANEL HORIZONTAL

Mounted horizontally between perforated uprights. 6 grounded schuko sockets. Electrical switch with light-emitting diode. 2 meter cable with grounded plug. Mains connection: 230 V – 50 Hz. We can also offer other solutions such as a socket for computer and safety switch.

Item no.	Description
203087	Energy panel horizontal, 1350 mm, aluminium, 2,7 kg
203088	Energy panel horizontal, 1775 mm, aluminium, 3,5 kg



SAFETY STOP

For accessories mounted on uprights, 2-pack, red.

Item no.	Description
42-272-0001	Safety stop, red



SHELVES

Shelves in sheet metal including 2 brackets, D300 mm.
Maximum of uniformly distributed load: 35 kg

Item no.	Description
41-842-0001	Shelf, beige, length 1350 mm, D: 300 mm
41-253-2001	Shelf, beige, length 1775 mm, D: 300 mm
42-590-0001	Shelf beige, length 1350 mm, D: 457 mm
42-591-0001	Shelf beige, length 1775 mm, D: 457 mm



SUSPENSION STRIP

Height 80 mm. Tiltable forward. Beige RAL 9002

Item no.	Description
42-595-0001	length 1350 mm
42-596-0001	length 1775 mm



BLUE PLASTIC BIN

Bin to attach onto suspension strip

Item no.	Description
20760005002	Blue plastic bin 96x105x45 mm
20750005002	Blue plastic bin 170x105x75 mm



PERFORATED TOOL STRIPE

Height 70 mm. Tiltable forward. Blue RAL 5005

Item no.	Description
42-602-0001	length 1350 mm
42-603-0001	length 1775 mm



CUTTING TOOL

Cutting tool for cutting of corrugated fiberboard, sturdy paper, foam etc. Mounted in the work top or between perforated uprights on the Flex Trolley.

Item no.	Description
40-753-0001	Cutting tool, 1360 mm with cutting width 1000 mm, weight 10 kg
40-446-0001	Cutting tool, 1860 mm with cutting width 1500 mm, weight 14 kg



UPPER AXLE FOR PACKING MATERIAL

Axle incl. holder for hanging packaging, labels etc. above table between perforated posts. Fits all tables.

Item no.	Description
41-845-0001	length 1350 mm
41-846-0001	length 1775 mm



AXLE LOWER FOR MANUAL AND HEAVY DUTY LEGS

Axle under the work top for suspension of packaging material such as corrugated fiberboard or foam.

Item no.	Description
41-261-0001	Axle Light H-frame, galvanized, length 1400 mm, weight 1,7 kg
41-262-0001	Axle Light H-frame, galvanized, length 1900 mm, weight 2,0 kg



LED-ARMATURE LONGITUDINAL

A compact longitudinal lighting with front illumination ramp, integrated LED lamps. RAL 9006. Brackets are screwed into pop nuts for stable mounting. The guide units are laterally movable. Including transformer and transformer bracket with magnet and 2 meters electric cable including switch.

Item no.	Description
42-278-0001	LED-armature, 1375x640 mm, RAL 9006, 34W, 2300 lumen
42-279-0001	LED-armature, 1800x640 mm, RAL 9006, 49W, 3200 lumen

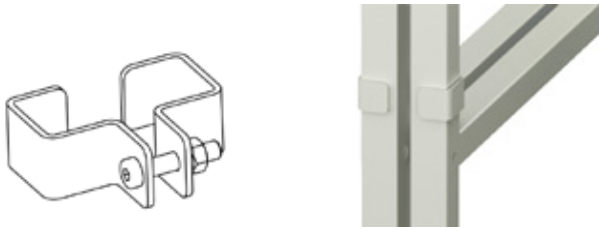
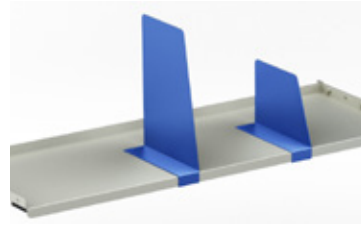


TABLE STAND CLAMP BRACKET

For Manual Table Light H, connects two tables sideways. (Fits tables length 1500 and 2000 mm) Beige RAL 9002.

Item no.	Description
42-589-0001	Table stand clamp bracket



CARDBOARD SUPPORT/SHELF DIVIDER

Divider for shelves that is clamped around the shelf. Delivered in pairs, available in two heights. Blue RAL 5005

Item no.	Description
42-598-0001	Shelf divider, height 200 mm, blue, weight 2 kg
42-599-0001	Shelf divider, height 400 mm, blue, weight 3,5 kg



CABLE DUCT

For mounting on uprights. W1930xH30xD29 mm. Beige RAL 9002

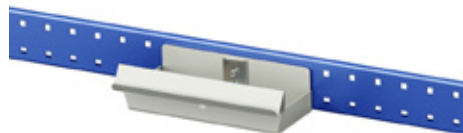
Item no.	Description
42-592-0001	Cable Duct



TABLET HOLDER

Flexible arm, attachment to uprights. B95xH225xD95 mm. The tablet can be locked.

Item no.	Description
42-617-0001	Tablet Holder



LABEL ROLL HOLDER

Fits on perforated tool strip or directly on the table top. W225xH30xD97 mm. Beige RAL 9002

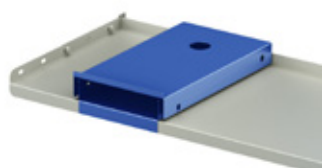
Item no.	Description
42-593-0001	Label roll holder



CUP HOLDER

Ø 78 mm, H100 mm. Fits to 42-602-0001 and 42-603-0001

Item no.	Description
40-746-9001	Cup holder



PULL OUT SHELF

For label printers or similar. Can be placed on shelves D300 or 457 mm. W25xH53xD475 mm. Blue RAL 5005

Item no.	Description
42-594-0001	Pull out shelf



LABEL HOLDER

Ø 35 mm, L410 mm

Item no.	Description
41-979-0001	Label Holder



KEYBOARD HOLDER

Flexible arm. Beige RAL 9002

Item no.	Description
42-610-0001	Keyboard holder



HOLDER / SHELF FOR TAPE HOLDER, BARCODE SCANNER OR DISPLAY FOR SCALES

W203xH340xD187 mm. Beige RAL 9002

Item no.	Description
42-597-0001	Holder/Shelf



FLEXIBLE FLAT SCREEN HOLDER

Flexible arm with fully rotatable universal holder (VESA 75/100) for flat screen and keyboard holder, mouse pad. Maximum load: 15 kg. Delivered with white plate.

Item no.	Description
42-038-2001	Flexible arm with flat screen and keyboard holder, mouse plate left/right, beige, weight 3kg



PULL OUT SHELF FOR PRINTER

Pull out shelf for printer. Powder coating RAL 9002 texture. Depth 505 mm. Pull out part: height 405 mm

Item no.	Description
89-513-0001	Pull out shelf for printer, w 350 mm
205647	Pull out shelf for printer, w 446 mm



CPU/PC HOLDER

Flexible, including straps

Item no.	Description
40-669-0001	CPU/PC holder



FLEXIBLE FLAT SCREEN HOLDER

Flexible arm with fully rotatable universal holder (VESA 75/100) for flatscreen. Maximum load: 15 kg

Item no.	Description
40-699-2001	Flexible arm with flat screen holder, beige, weight 3kg



PULL-OUT KEYBOARD SHELF

Shelf 565x470x95 mm complete with mouse holder, attachments and fasteners. The shelf is fitted to extensions rails which allows 100 % extension. The mouse plate can be pulled out on either the right or left hand side. Can be used on all BASEline Packing Stations. Maximum weight capacity uniformly distributed load: 20 kg. Delivered with white plate.

Item no.	Description
42-039-0001	Pull-out keyboard shelf, weight 3,6 kg



HOLDER FOR CPU, MINI TOWER

300x90x100 mm. Fits on the upright. Beige RAL 9002

Item no.	Description
42-617-0001	Holder CPU



PLATE/DOCUMENT HOLDER ON FLEXIBLE ARM

W 290 x H 330 mm, A4 15 kg. RAL 9002 Beige

Item no.	Description
36-320-2001	Plate/document holder



FLEXIBLE SHELF, ADJUSTABLE

W 405 x D 305 mm, 15 gk. RAL 9002 Beige

Item no.	Description
36-315-2001	Flexible shelf



HOLDER FOR SLC ON FLEXIBLE ARM

545x120x170 mm

Item no.	Description
35-875-2001	Holder for SLC, plastic bin



LED STRIP L-1170 MM

Magnetic attachment, suitable placement is under a shelf.

Item no.	Description
42-611-0001	LED strip L-1170 mm



DRAWER UNIT, HEIGHT 380 MM

Mounted in the frame with help of suspension profiles.

Maximum load for drawer unit, uniformly distributed weight: 100 kg

Maximum load for drawer, uniformly distributed weight: 25 kg

* Not possible to fit in when lower shelf is used.

Item no.	Description
40-555-2101	Drawer unit for storage, HxWxD 380x375x485 mm,



ONE DRAWER, HEIGHT 200 MM

Lockable packing station drawer with expansions which allows 100 % extension. The drawer is mounted in the frame with help of suspension brackets or screwed.

Maximum load, uniformly distributed weight: 25 kg

Item no.	Description
40-551-2101	Drawer unit 1, HxWxD 200x340x485 mm, beige/blue, weight 7 kg



SUSPENSION PROFILES, PAIRS

Suspension profile for drawer units.

Delivered in pairs.

Item no.	Description
41-898-0001	Suspension profile for ErgoMini II, beige, weight 1 kg
35-520-2002	Suspension profile for Light H-frame, depth 800 mm,



ENERGY PANEL VERTICAL WITH HOLDER INCLUDED

Mounted vertically on perforated upright with help of the holder. 4 grounded schuko sockets, main switch with lighting, 2 m cable with grounded plug.

Mains connection: 230 V – 50 Hz

Item no.	Description
203089	Energy panel, vertical, holder included, beige



TABLE SCALES

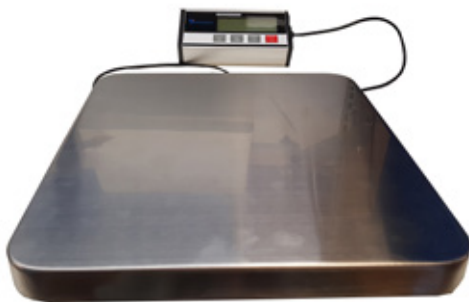
High-precision table scales that can be used independently or mounted in the tables for best ergonomics. Surcharge price supplement.

Item no.	Description
42-539-0001	Scale FW66, max 60 kg, solution 20 g, 500x400x91 mm



SCALE CONTAINER FOR FW66

Item no.	Description
41-294-0001	Scale container for FW 66



SCALE 6000 KD

Resolution 50 g, Dimensions: 320x300x30 mm. Maximum load: 150 kg

Item no.	Description
42-476-0001	Scale 6000 KD



SCALE CONTAINER FOR KD-6000

Fits to scale KD-6000.

Item no.	Description
42-459-0001	Scale container KD-6000



RECYCLING BIN

Plastic grey recycling bin 60 l. Metal trolley with 4 castors is available for 60 l or 90 l and can be connected with clutch fittings.



Item no.	Description
K107365	Recycling Bin, 60 l, Grey Plastic, without lid
K107392	Trolley for 1 Recycling Bin, 60 l or 90 l, grey
K107394	Coupling Kit grey, for Trolley K107392 with Recycling Bin



SILO INTEGRATIONS & TROLLEYS

FLEXIBILITY MEANS
ADDING THINGS AS REQUIRED.



SILO FREESTANDING

The standalone silo can be used in combination with the three table types of BASEline, and can be placed optionally, for example:

- ▶ ON THE RIGHT OR LEFT SIDE OF A PACKING STATION
- ▶ ON THE RIGHT OR LEFT SIDE OF TWO PACKING STATIONS POSITIONED BACK TO BACK
- ▶ BETWEEN TWO OR MORE PACKING STATIONS PLACED SIDE BY SIDE

Item no.	Description
42-613-0001	Freestanding Silo/ Hopper

TECHNICAL DATA

Dimensions total:

W 650 mm, H 2122 mm, D 1000 mm

Dimensions silo:

W 650 H 800 D 650 mm

Colors:

Beige RAL 9002 and Blue RAL 5005



SILO INTEGRATED ON THE PACKING STATION

This integrated silo is only used in conjunction with the Heavy Packing Table in the size L2000xD800 mm. The silo can be longitudinally placed optionally on the table, the support legs for the silo are attached to the table's extension frame.

Please contact us in case of demand.

Item no.	Description
42-612-0001	Silo for integration

TECHNICAL DATA

Dimensions total:

W 650 mm, H 1775 mm, D 1000 mm

Dimensions silo:

W 650 H 800 D 650 mm

Colors:

Beige RAL 9002 and Blue RAL 5005



Freestanding and integrated Silos are designed to receive an AIRplus® machine equipped with a manual lift. The lift must be ordered directly from Storopack and will be dispatched from the Service Center in Metzingen.

HEAVY PACKING TABLE

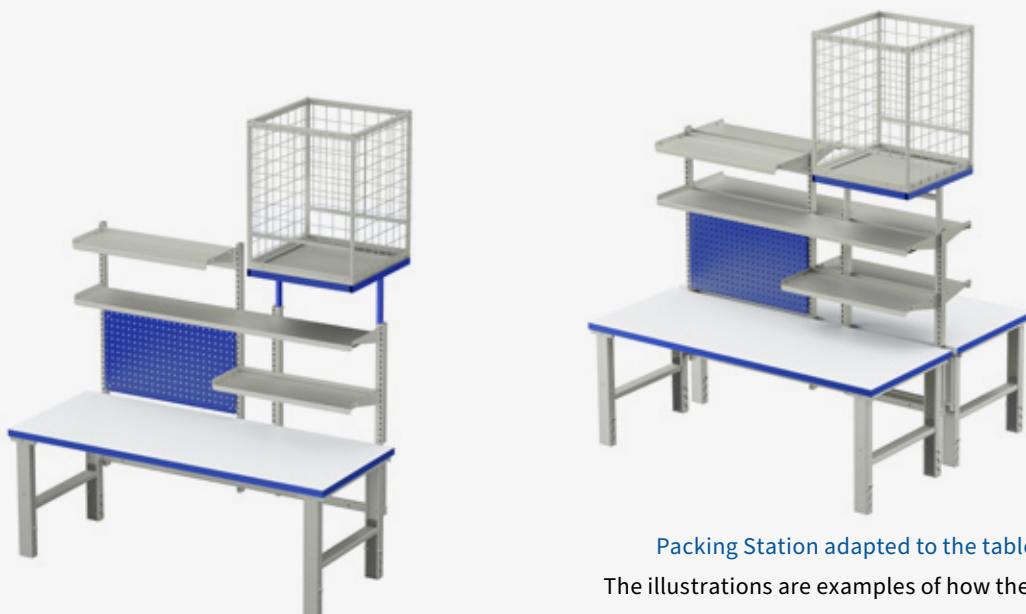
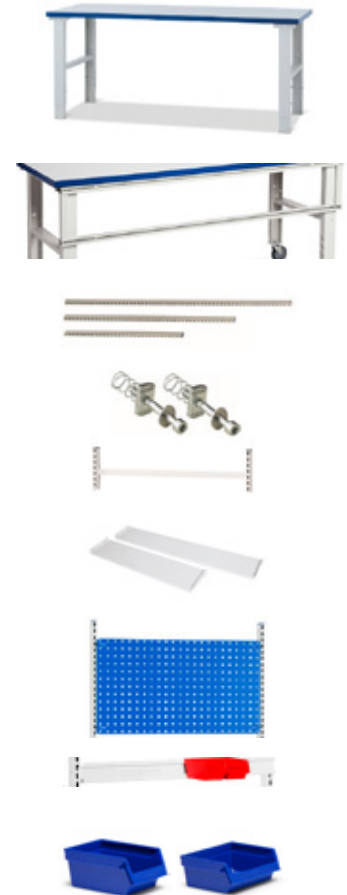
Consists of Heavy Packing Table leg stand which is a stable table stand with manual height adjustment with

40 mm table tops. Maximum load of 350 kg wide load and a working height of 740-1010 mm.

Item no.	Description
42-255-0001	Heavy Table 2000x800 mm
35-452-2001	Extention/Multi Frame 1920 mm

COMPLEMENT THE PACKING STATION WITH AN INTEGRATED SILO, WITH SOME OF THE FOLLOWING ACCESSORIES.

Item no.	Description	
40-647-2002	Upright L 1446 mm, 2-pack	1 per table
40-649-2002	Upright L 1926 mm, 2-pack	1 per table
35-848-9001	Mounting kit, uprights	2 per upright
35-490-2001	Distance for Upright 875 mm	1 per table
35-907-2001	Shelf 645x300 mm	can be placed under the Silo
35-862-2001	Shelf 875x300 mm	2 in width can be mounted
40-776-2001	Shelf 875x457 mm	2 in width can be mounted
35-909-1030	Perforated tool board 640x480 mm	placed under the Silo
35-856-1030	Perforated tool board 870x480 mm	2 in width can be mounted
35-911-2001	Suspension Rail 670x80 mm	can be placed under the Silo
35-870-2001	Suspension Rail 900x80 mm	2 in width can be mounted
20760005002	Blue plastic bin 96x105x45 mm	can be placed on suspension rail
20750005002	Blue plastic bin 170x105x75 mm	can be placed on suspension rail



Packing Station adapted to the table-mounted silo:

The illustrations are examples of how the Heavy Packing Table together with the Integrated Silo and a selection of possible accessories can look.

FLEX TROLLEY

FLEX TROLLEY 1

Flex trolley base frame

1350 mm with cutting tool, axle, shelf and 6 shelf dividers (card board supports).

Item no.	Description
41-942-0001	Flex trolley 1350 base frame, cutting width 1000 mm, shelf width 1350 mm



FLEX TROLLEY 2

Flex trolley base frame, 1350 mm with cutting tool and axle.

Item no.	Description
41-941-0001	Flex trolley 1350 base frame, cutting width 1000 mm, shelf width 1350 mm



FLEX TROLLEY 3

Flex trolley base frame 1350 mm with 4 shelves and 10 shelf dividers (card board supports) height, 200 mm and 2 shelf dividers, height 400 mm.

Item no.	Description
41-943-2130	Flex trolley 1350 base frame, shelf width 1350 mm

STOROPACK – PERFECT PROTECTIVE PACKAGING

Wherever in the world you send your products, we want them to be well protected while in transit.

EFFICIENT OPERATIONS WITH BASEline Packing Stations

Ergonomic workspaces and efficient operations solutions help increase the productivity of your protective packaging process - BASEline Packing Stations combine both.

 **More about Packing Stations:** www.storopack.com/packing-stations

CONTACT US

Storopack Deutschland GmbH + Co. KG

Untere Rietstrasse 30
72555 Metzingen
Germany

Africa & Middle East	+49 7123 1640
Asia-Pacific	+852 3421 2392
Europe	+800 7867 6722
North America	+1 800 827 7225
South America	+55 11 5677 4699

info@storopack.com
www.storopack.com